

# EFFECI

## 251/252/352

### BLIND STITCH



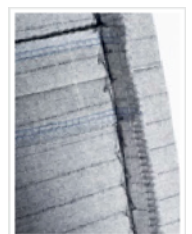
Blind-stitch machine for generic use, 1 thread and 1 or 2 spring plungers and skip-stitch 1:1-1:2 device. The model with one single spring plunger is suitable for sew the prefabricated waistband of classic trousers and in all seams with uneven thicknesses. The model with double spring plungers is particularly suitable for the bellows hem on classic skirts and trousers where an invisible stitch is required on both sides.

- Easy adjustment of the needle penetration thanks to the micrometric wheel
- 1 thread blind hook
- Compensating foot
- Detachable worktop
- Spring plungers
- Double foot pressure adjustment

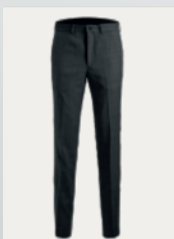
251-31



252/352



Model	251-31	252	352
Destination	Light	Heavy	Light
Spring Plungers	1	2	2
Stitch Type - Min/Max stitch length	103 - 3/8mm	105 - 3/8mm	105 - 3/8mm
Needle	251 EU	251 LG	251 EU
Max Speed	3000rpm	2500rpm	2500rpm



@fuse\_carlo\_spa  
www.fuse.it  
fuse@fuse.it

