

# EFFECi

## 289

### BUTTON NECK-WRAPPING MACHINE

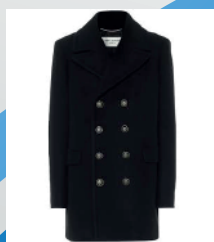


## Features



The machine demonstrates the highest productivity among button-neck-wrapping machines intended for men's and ladies' outer wear. A single machine unit permits the quick changeover of types of buttons to be sewn, flat buttons, shank button, marble buttons and stay buttons with a onetouch utility lever.

- Neck-wrapping buttons
- Cycle stitching
- Touch Control Panel
- 15 Languages
- Electronic voltage
- Laser positioning
- LED light
- Side loader



@fuse\_carlo\_spa  
www.fuse.it  
fuse@fuse.it

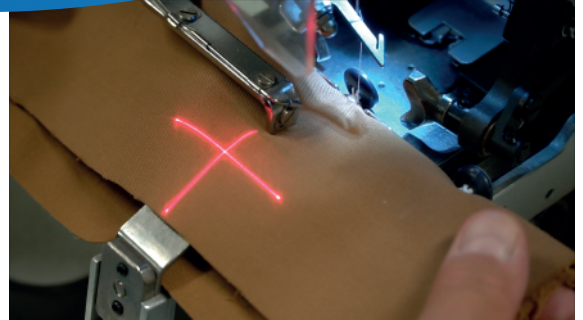


289

BUTTON NECK-WRAPPING  
MACHINE

## Laser Pointer

Laser indicator for the positioning of the garment: it indicates the point where the button with the wrapper will be sewn, that is where the fold of the fabric must be aligned to obtain an invisible stitch type sewing.



## Side loader

The machine is equipped with a button feeder that allows you to preload the new button while the machine sews. In addition, the delivery position of the button can be adjusted from the panel.



## Touch Display

Using the latest generation multi-language touch screen panel, it is possible to select the type of button you want to attach, to center and modify various settings such as the height of the stem.



## Specs

Model	289
Button neck-wrapping	8-32 mm
Button without neck-wrapping	8- 38 mm
Counter Button	8-25 mm
Max Speed without neck-wrapping	1200 rpm
Max Speed neck-wrapping	1800 rpm